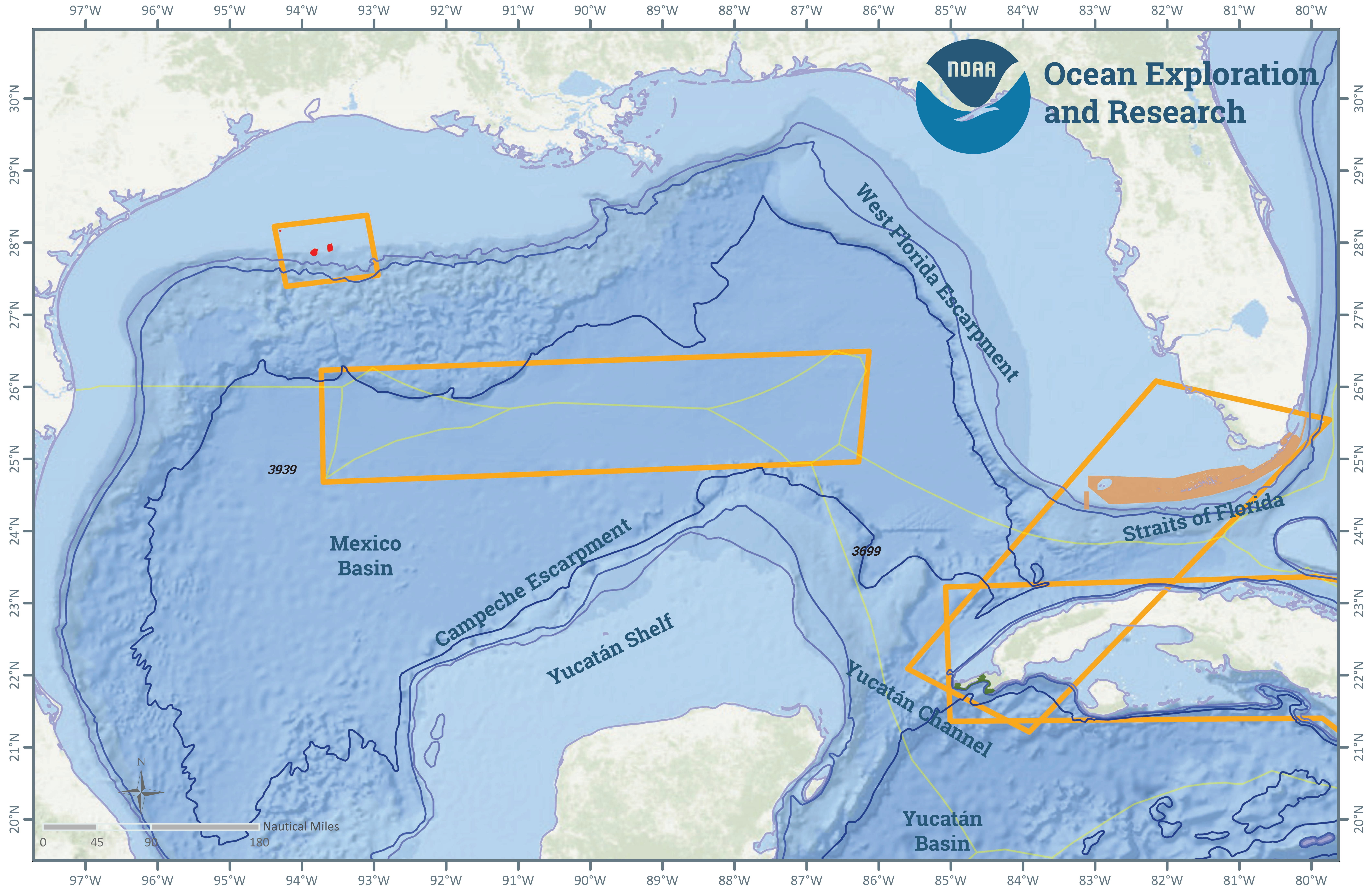


National Ocean Exploration Forum 2016

Gulf of Mexico



- Guanahacabibes National Park
- Florida Keys NMS
- EEZ Boundaries
- Areas of interest
- Flower Garden Banks NMS

- 200 m
- 500 m
- 1000 m
- 2500 m

Themes of Interest

- | | | | | |
|----------------|------------------------------|-------------------------------|----------------------------|-----------|
| Bathymetry | Genetic Interconnectivity | Submerged Cultural Resources | Submarine Landslides | Acoustics |
| Deep Sea Coral | Water Column Characteristics | Sanctuary Borders & Resources | Deepwater Horizon Recovery | |
| Reef Die-Off | Fish Distribution | Hypoxia | Chemosynthetic Communities | |

Prepared by the NOAA Office of Ocean Exploration and Research for "National Ocean Exploration Forum 2016: Beyond the Ships."

Sources: Esri, GEBCO, NOAA, National Geographic, DeLorme, HERE, Geonames.org, and other contributors