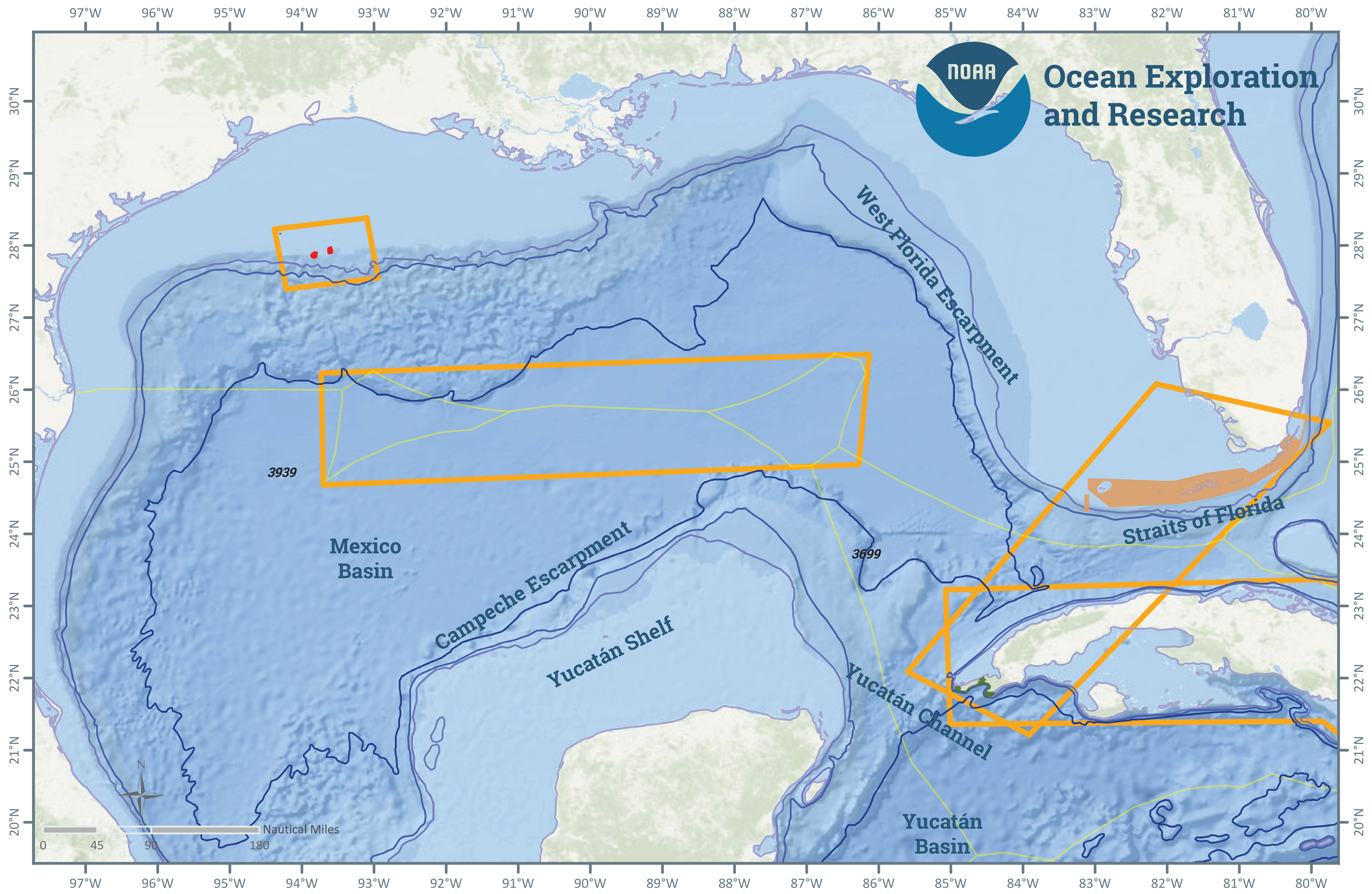


National Ocean Exploration Forum 2016

Gulf of Mexico



- Guanahacabibes National Park
- Florida Keys NMS
- EEZ Boundaries
- Areas of interest
- Flower Garden Banks NMS

Themes of Interest

- Bathymetry
- Deep Sea Coral
- Reef Die-Off

- Genetic Interconnectivity
- Water Column Characteristics
- Fish Distribution

- Submerged Cultural Resources
- Sanctuary Borders & Resources
- Hypoxia

- Submarine Landslides
- Deepwater Horizon Recovery
- Chemosynthetic Communities

Prepared by the NOAA Office of Ocean Exploration and Research for "Nation Ocean Exploration Forum 2016: Beyond the Ships."

Sources: Esri, GEBCO, NOAA, National Geographic, DeLorme, HERE, Geonames.org, and other contributors