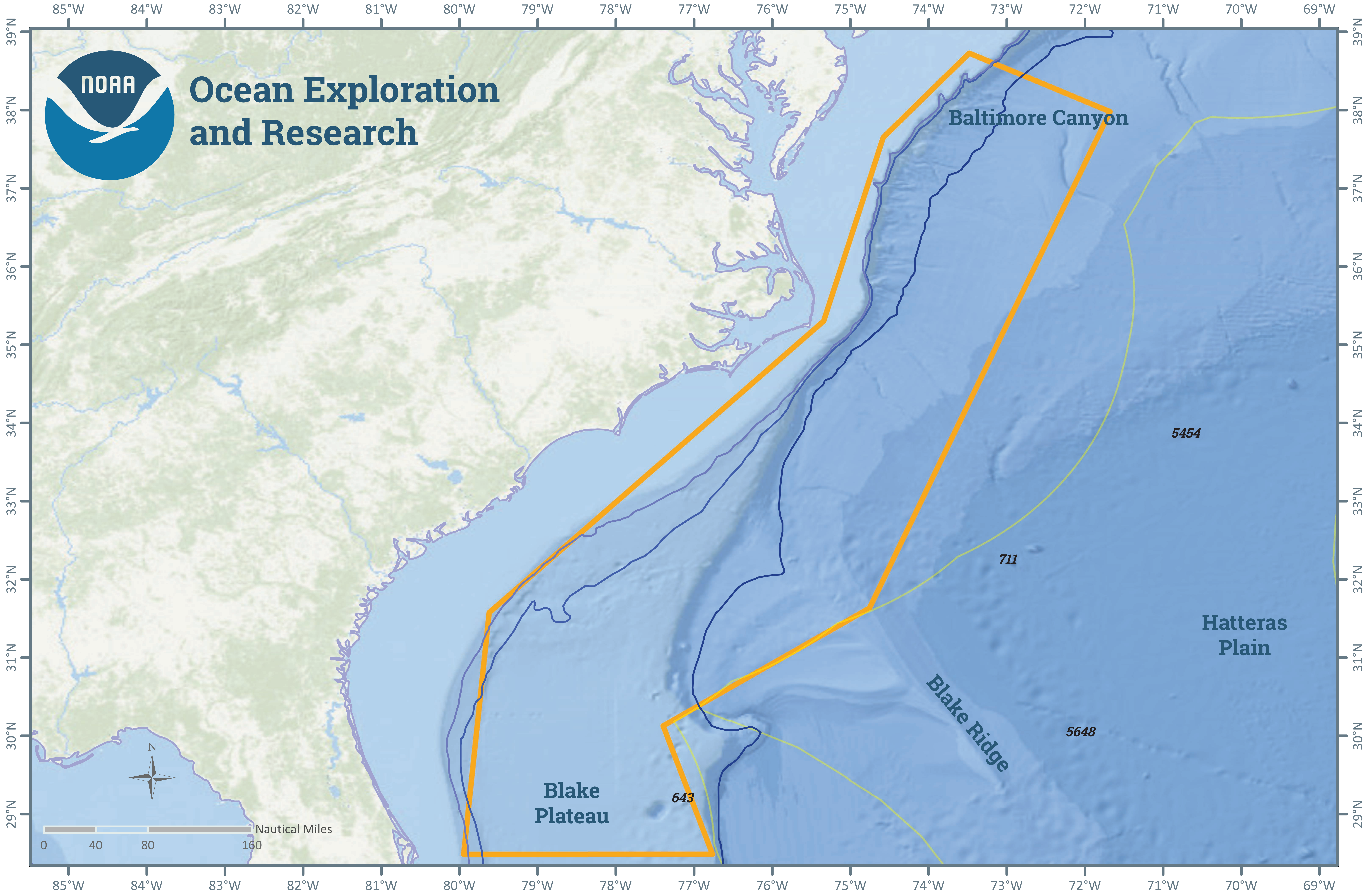


National Ocean Exploration Forum 2016

Southeast U.S. Coast Bight



— EEZ Boundaries

▭ Area of interest

- 200 m
- 500 m
- 1000 m
- 2500 m

Themes of Interest

- Bathymetry
- Genetic Interconnectivity
- Submerged Cultural Resources
- Submarine Landslides
- Deep Sea Coral
- Water Column Characteristics
- Sanctuary Borders & Resources
- Acoustics
- Reef Die-Off
- Fish Distribution
- Chemosynthetic Communities

Prepared by the NOAA Office of Ocean Exploration and Research for "Nation Ocean Exploration Forum 2016: Beyond the Ships."
Sources: Esri, GEBCO, NOAA, National Geographic, DeLorme, HERE, Geonames.org, and other contributors