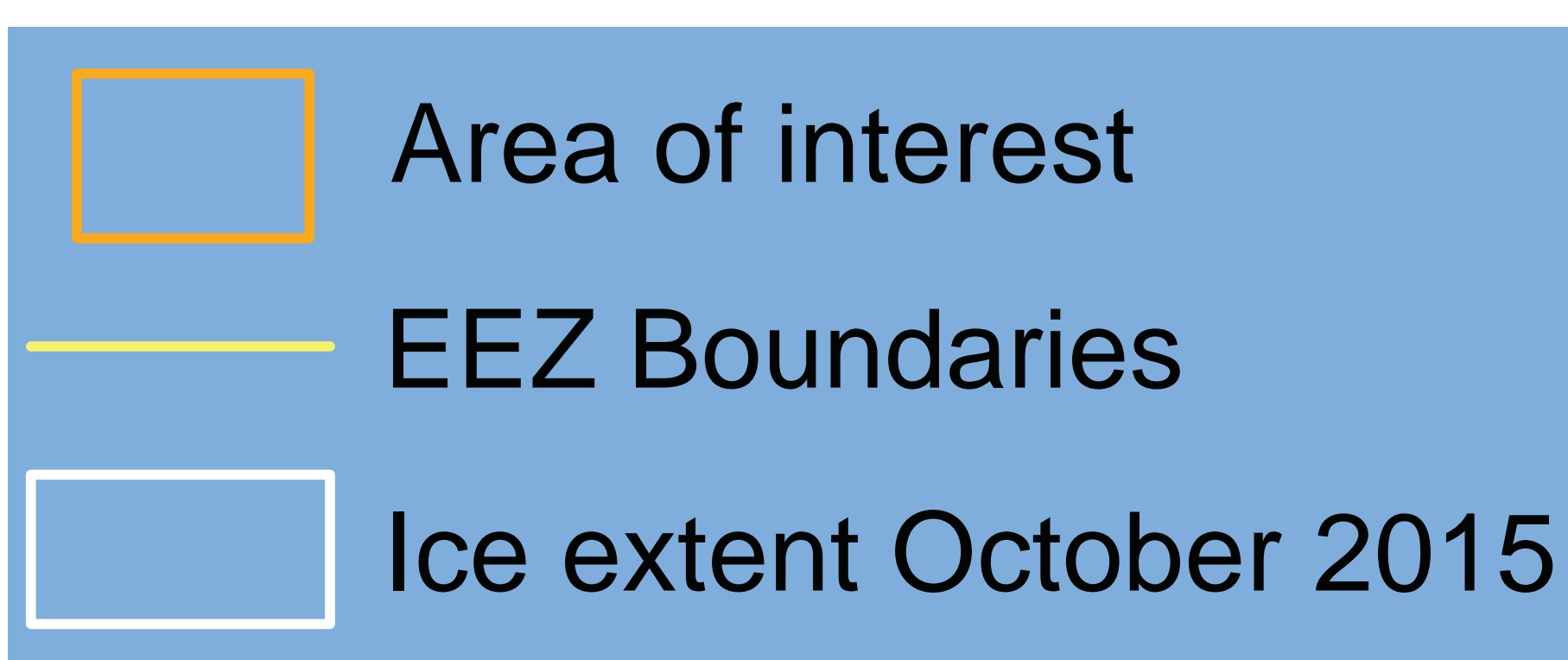
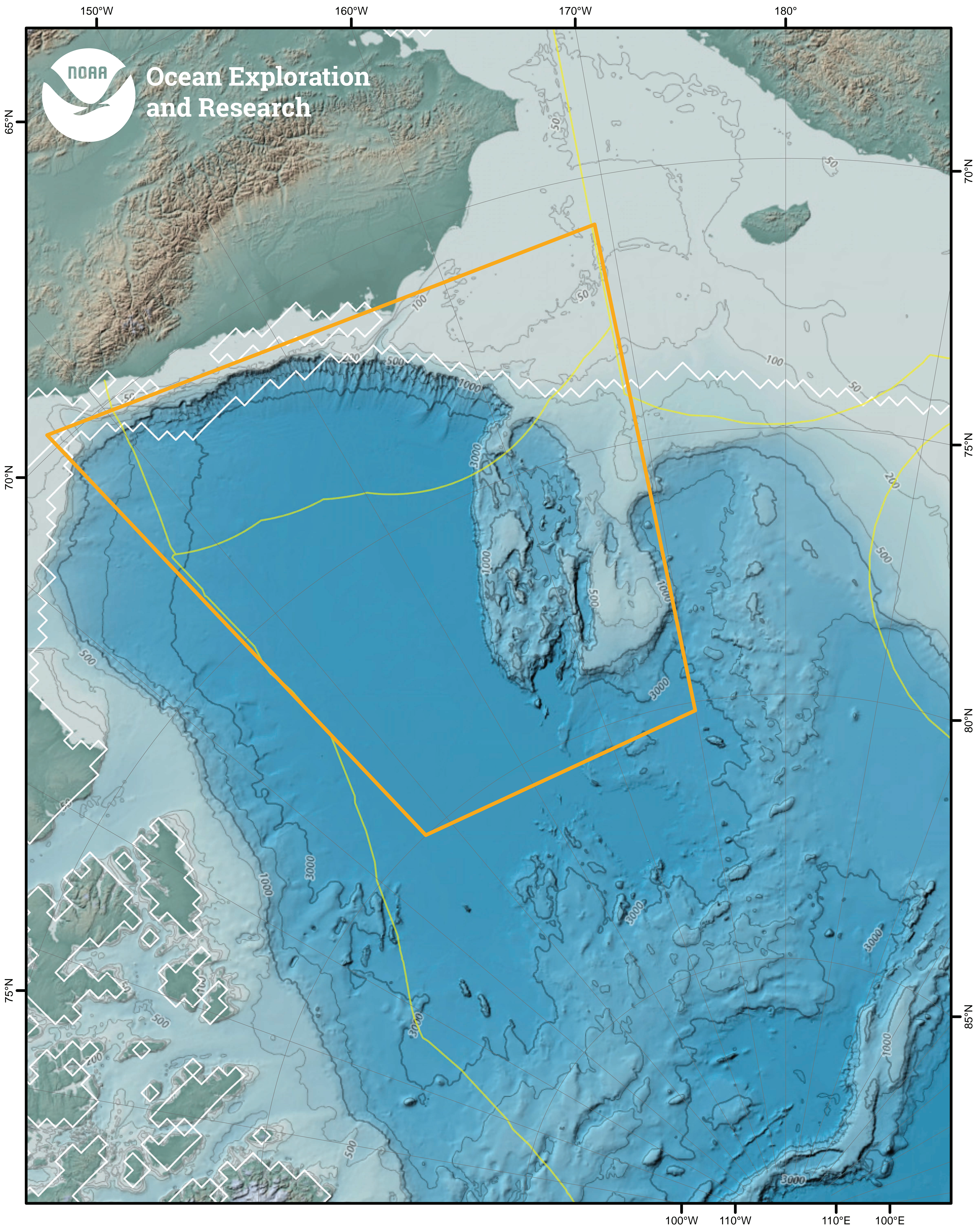


National Ocean Exploration Forum 2016

Arctic



Themes of Interest



Bathymetry



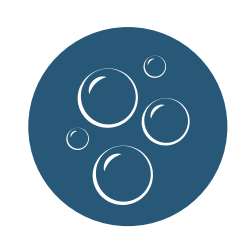
Genetic Interconnectivity



Submerged Cultural Resources



Geomorphology



Water Column Characteristics



Ice Edge Changes



Fish Distribution



Chemosynthetic Communities



Acoustics

Prepared by the NOAA Office of Ocean Exploration and Research for "Nation Ocean Exploration Forum 2016: Beyond the Ships."

Sea ice extent from National Snow Service Layer Credits: NOAA National Centers for Environmental Information (NCEI); International Bathymetric Chart of the Arctic Ocean (IBCAO); General Bathymetric Chart of the Oceans (GEBCO)